

BLADE RUNNER BY EMILY ATWOOD



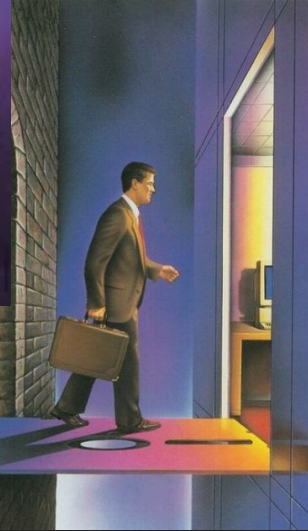
Through the City of TOMORROW
Without

...predicts
NORMAN BEL GEDDES

"All vehicles will be motorized through the city of 1939 or thereabouts, especially designed to carry traffic moving at overall established speeds," says Mr. Geddes, who clearly sees future trends.

"A network of the wide one-lane Express Highways for the city will handle all traffic going two blocks or more, creating a one-lane flow of cars, unimpeded by stop lights, intersections or pedestrians.

"The local streets elevated sidewalks will carry pedestrians under these streets... building entrances and shop windows will be at convenient level. Trucks will be parked, cars parked in open areas beneath buildings. Thus the complete ability of access to these buildings, but buildings there will be clear for motor traffic."



"I'll of Promise"
©1939 Henning Fine Art, Inc. for the Science Fiction Museum, New Jersey
1.00PM, 11 October 1931

...but TODAY
4 miles in 5
Stop and Go

YOU can drive up to ten miles on the same amount of gasoline as you would on today's average!

The costliest kind of driving you do, time and money, is stop and go.

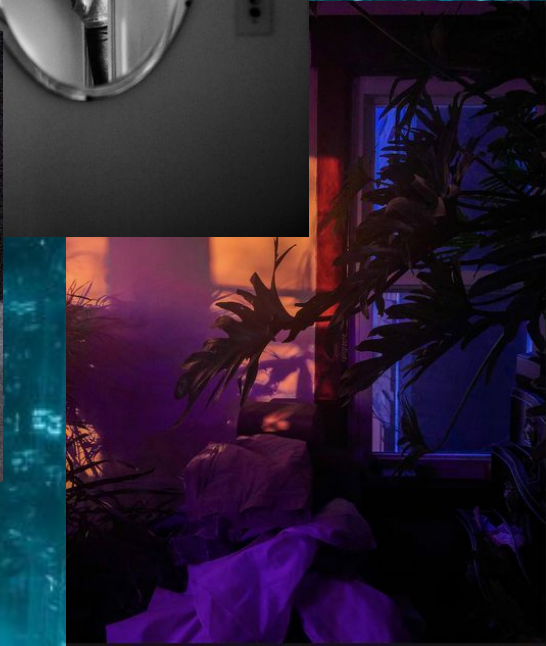
While traffic authorities are planning City of Tomorrow, Shell engineers have sped a fuel, Super-Shell, to meet today's problem TODAY.

Automotive engineers refer to Super-Shell as "motor-digestible," an quickly and complete energy, changed into power... at ALL times.

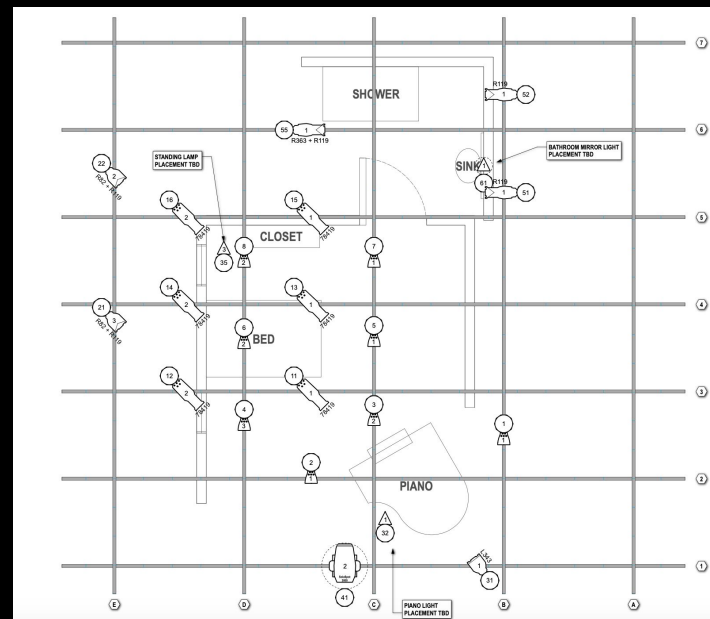
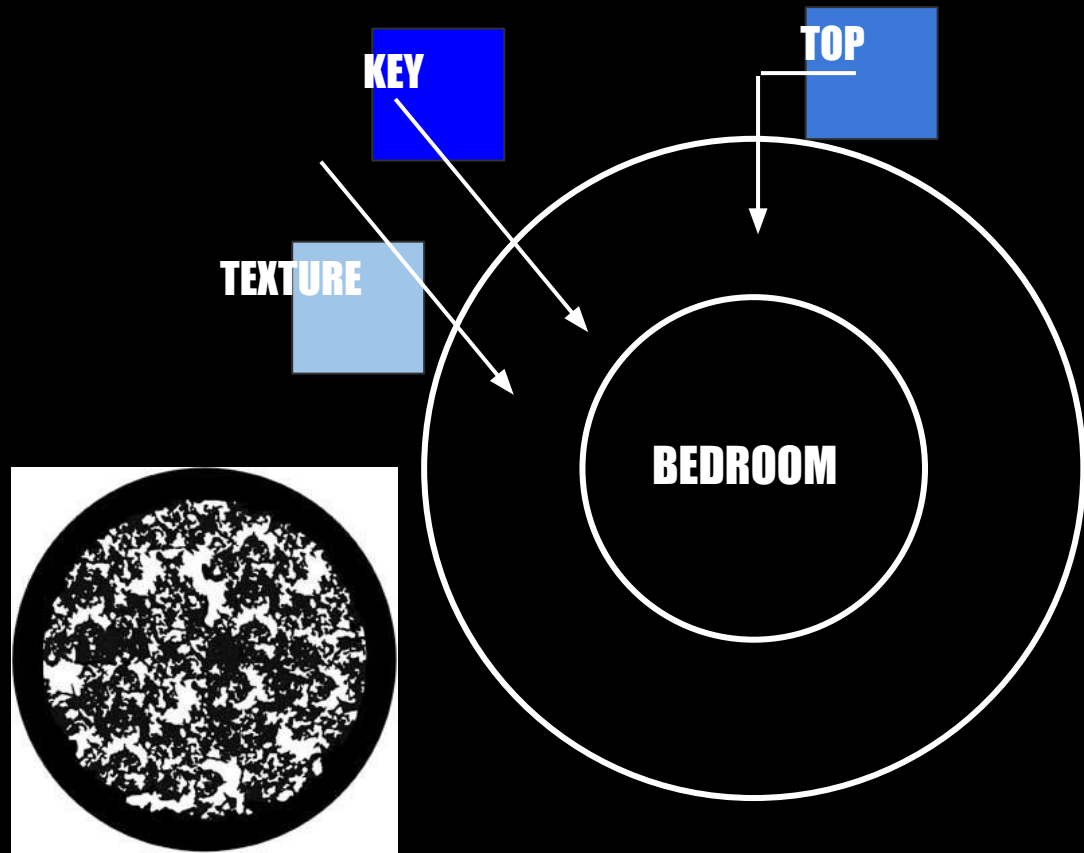
You'll cut the cost of your stop-and-go in the regular use of Super-Shell Gasoline at a Shell dealer in your neighborhood.



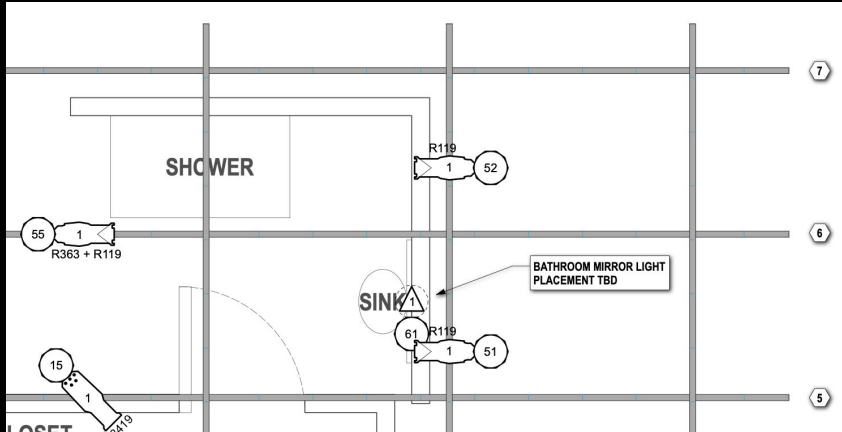
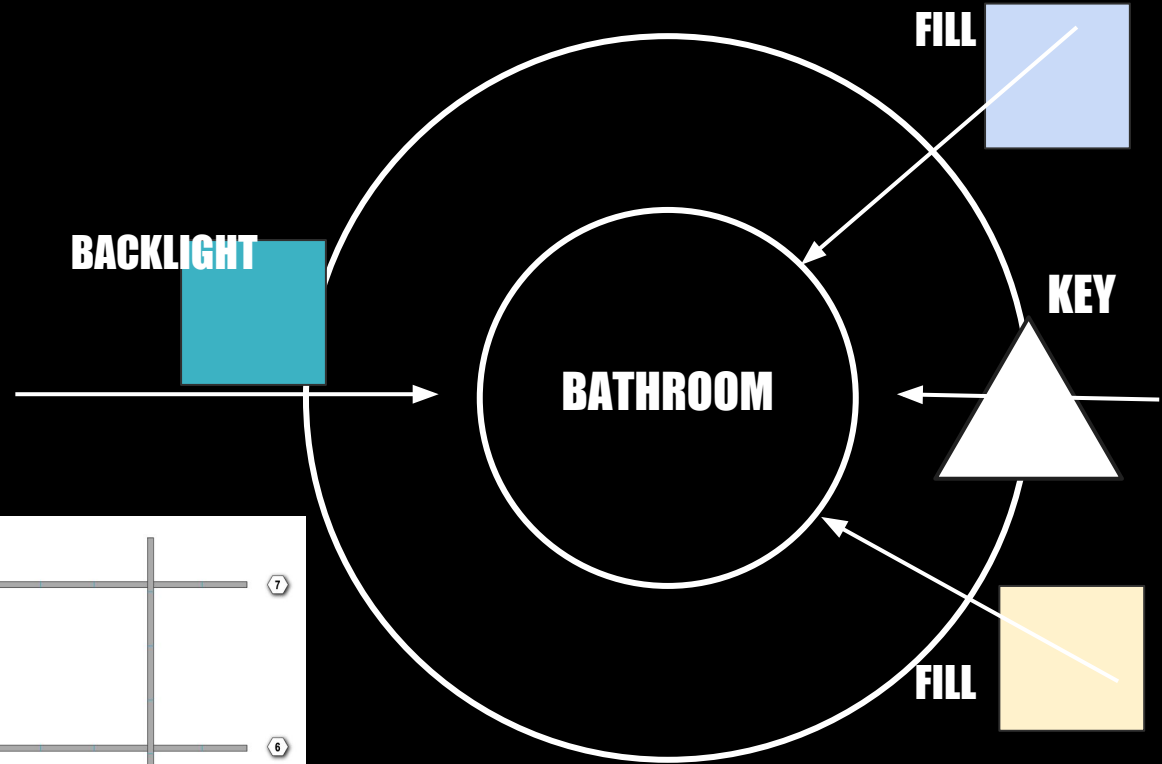
BLADE RUNNER PG 62-65 // INT. BEDROOM AND BATHROOM



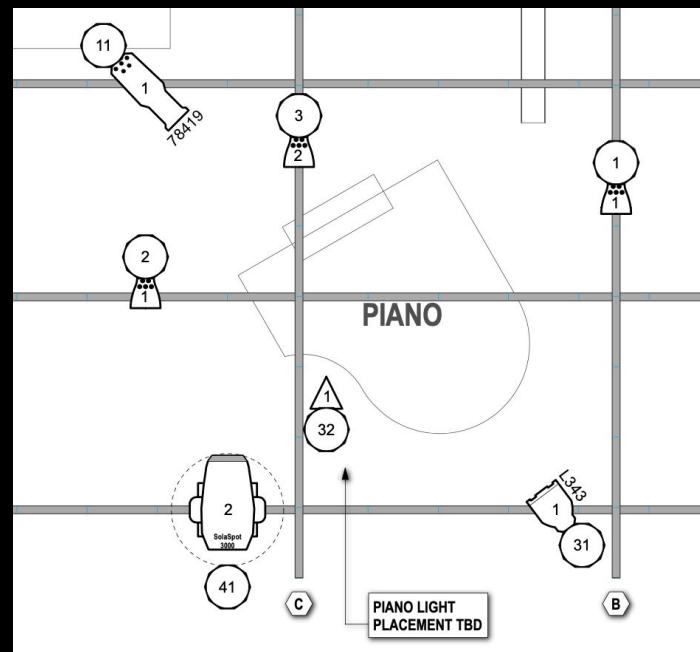
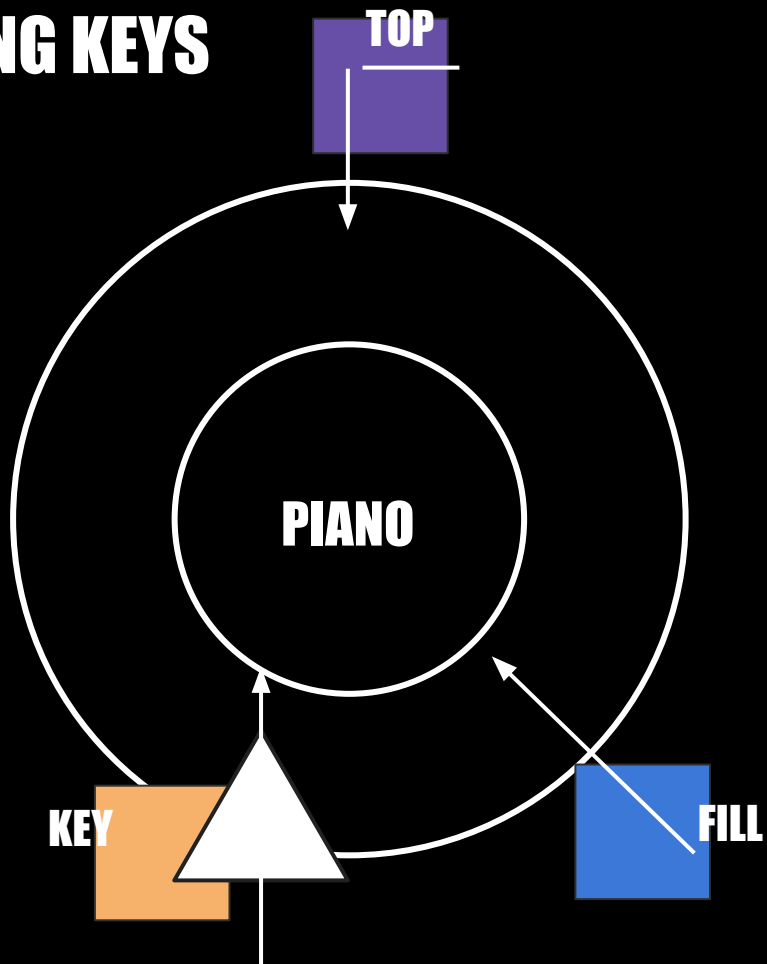
LIGHTING KEYS

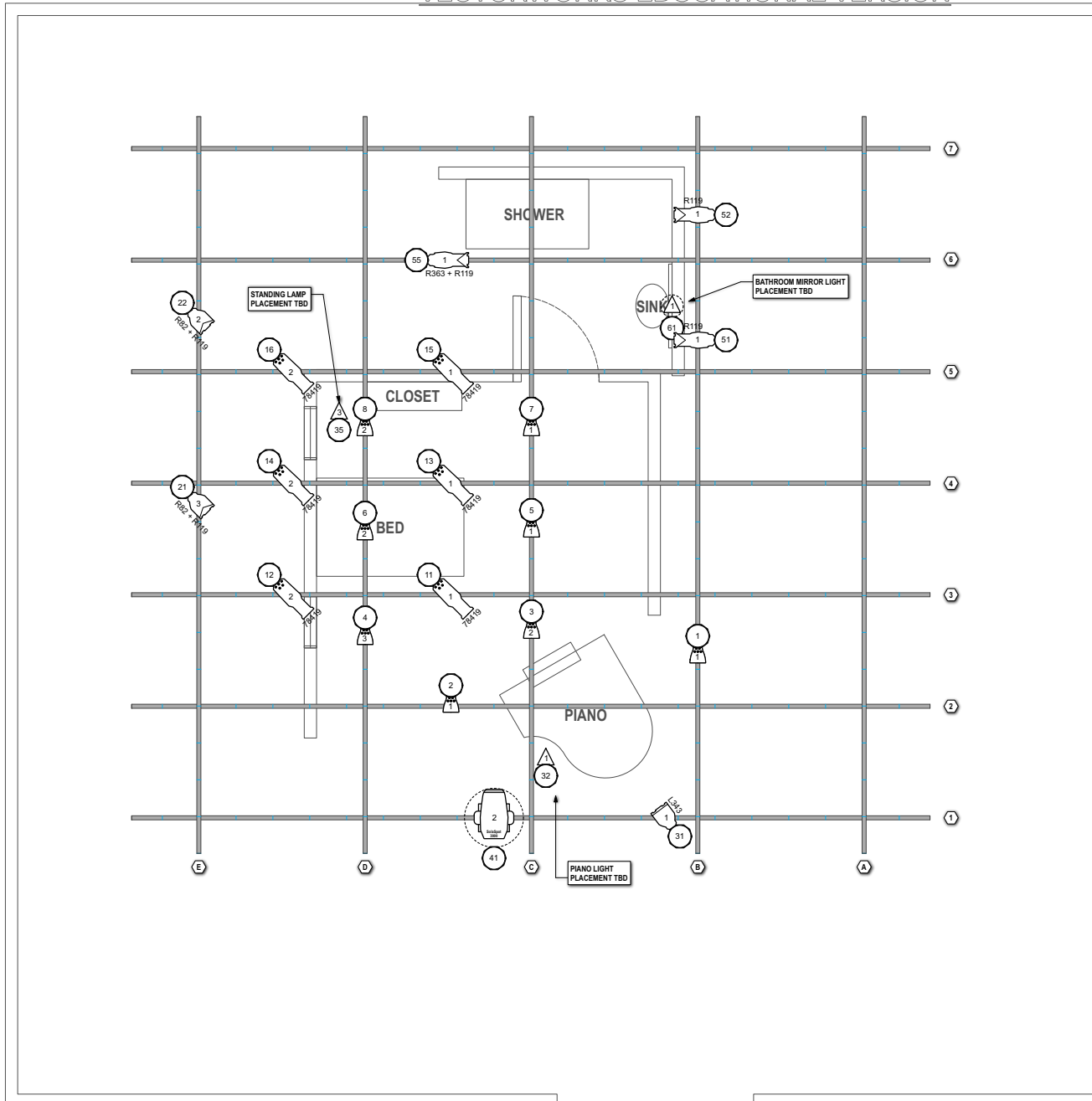


LIGHTING KEYS











LIGHTING KEYS





INSTRUMENT KEY

-  1000w SOLASPOT 3000
-  120w SOURCE FOUR LUSTRA 36deg
-  90w COLORSOURCE PAR
-  575w SOURCE FOUR 50deg
-  575w SOURCE FOUR PAR WFL
-  575w SOURCE FOUR PARNEL
-  HANGING PRACTICAL
-  DECK PRACTICAL

Venue: RANDOM VENUE
LOCATION AVE
CITY, STATE, ZIP

Scale: 1:24

DIRECTOR: TIM
SCENIC: EMILY ATWOOD
ASST SCENIC: JOE SHMOE
PROPS: JANE DOE
COSTUMES: SALLY SMITH
LIGHTING: EMILY ATWOOD
SOUND: DAVID M LAWSON
STAGE MANAGER: SARAH BROWN
PRODUCTION MANAGER: TIM

TABLE LEGEND KEY GOGO
UNIT #
CHANNEL #

THIS DRAWING REPRESENTS VISUAL CONCEPTS AND CONSTRUCTION SUGGESTIONS ONLY. IT DOES NOT REPLACE THE KNOWLEDGE AND ADVICE OF A LICENSED STRUCTURAL ENGINEER. THE DESIGNER IS UNQUALIFIED TO DETERMINE THE STRUCTURAL APPROPRIATENESS OF THIS DESIGN AND WILL NOT ASSUME RESPONSIBILITY FOR IMPROPER ENGINEERING OR USE.

Date: 3/12/22
Version: 1
Revised By: EMILY ATWOOD
Draft By: EMILY ATWOOD

REV:	DATE:	NOTES:
A	3/12/22	PRELIM

Plate Title: LX PLOT

Plate: 1

BLADE RUNNER